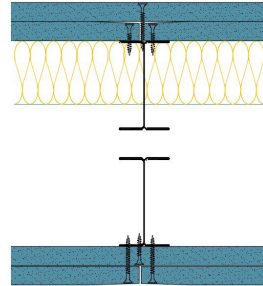


TWI70-K-60(50)(210) - SPEEDLINE System Data Sheet - Version V1 (24-10-23)

Twin SPEEDLINE 70mm 'I' Stud Partition @600mm Ctrs, with 2x Knauf 15mm Soundshield Plus each side, 50mm APR



System Performance Breakdown

Fire Resistance:

BS476 Part 22:1987:

Test Ref & Date or Applied Ref & Report:

Max Height:

Thickness:

Duty Grade: BS 5234: Part 2:1992:

Sound Insulation:

120/120 Minutes (Integrity/Insulation).

BMT/FEP/F14077 - BRE Report P102396-1011B

Refer to Speedline Specification Clause

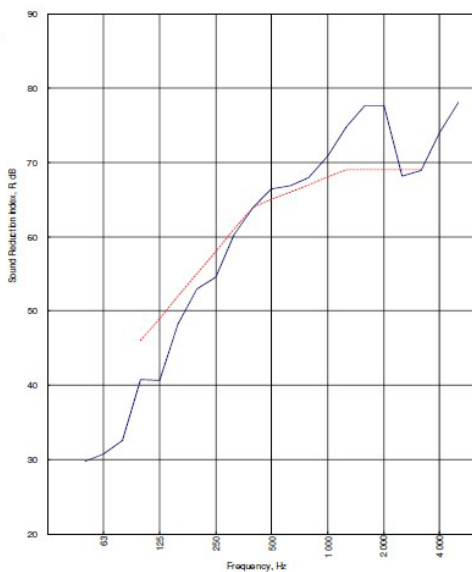
210 mm. (At Base Track, Excluding Finishes)

Severe - Annexes A-F

65 R_w dB, -9Ctr Date Tested or Assessed Against - TWI50-K-59(50)(200)

Test Code:
H20697AA
Test Date:
09/10/2018

Freq. Hz	R dB
50	29.8
63	30.7
80	32.6
100	40.8
125	40.7
160	48.2
200	53.0
250	54.6
315	60.3
400	63.9
500	66.4
630	66.9
800	67.9
1 000	70.9
1 250	74.8
1 600	77.6
2 000	77.7
2 500	68.2
3 150	68.9
4 000	74.0
5 000	78.1



Rating according to BS EN ISO 717-1:2013	R_w (C;Ctr) = 65 (-3;-9) dB		
Evaluation based on laboratory measurement results obtained by an engineering method:	Max dev. 8.3 dB at 125 Hz		
	$C_{50-3150}$ -6 dB	$C_{50-5000}$ -5 dB	$C_{100-5000}$ -2 dB
	$C_{125-3150}$ -17 dB	$C_{125-5000}$ -17 dB	$C_{125-100-5000}$ -9 dB

TESTED AT ONE OF THE UKAS ACCREDITED LABORATORIES BELOW

B.T.C (H-Ref on Graph)

B.R.E

AIRO

S.R.L

Customer: Voestalpine Metsec Plc

BTC 20697A: Page 11 of 14



SPEEDLINE Drywall Systems, Adsetts House, 16 Europa View, Sheffield Business Park, Sheffield, S9 1XH.

Tel: 0114 231 8030.

Email: enquiries@speedlinedrywall.co.uk

(As per the requirements set out in ISO/IEC 17025:2017 regarding test data the results stated have been carried out by voestalpine Metsec plc as part of the contract to supply Speedline Metal Sections to SIG plc)